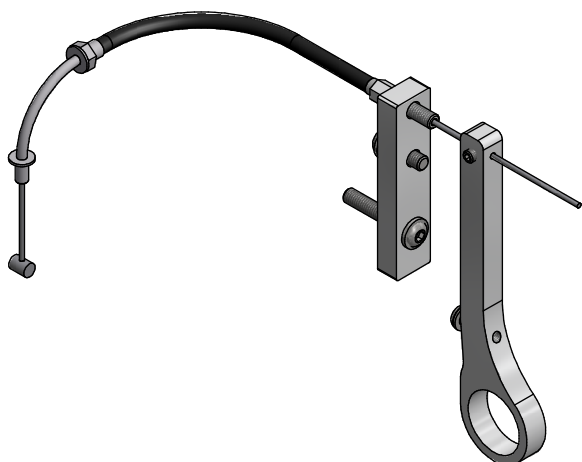


PEDAL ARM TO BE
DRILLED TO SUIT M5
ARM EXTENSION HOLE

LONG M6 SCREW
THROUGH BRACKET
& PEDAL TO BULKHEAD



PARTS LIST			
ITEM	PART NUMBER	DESCRIPTION	QTY
1	TPED-MX5NC-001	MX5 NC THROTTLE PEDAL EXTENSION	1
2	TPED-MX5NC-002	MX5 NC Pedal Cable Plate	1
3	SCR-M6x20BZP-SKTBH	Socket Button Head Cap Screw	1
4	WSH-M6	M6 PLAIN WASHER	2
5	Barrel Adjuster M6 standard	M6 Barrel Adjuster	1
6	SCR-M6x35BZP-SKTBH	Socket Button Head Cap Screw	1
7	BS 4168 - M5 x 6	M5 x 6 Grub Screw	2
8	SCR-M5x12BZP-SKTBH	Hexagon Socket Button Head Screw	1
9	BS 4320 - M5 (Form A)	Bright metal washers - Metric series	1

danST ENGINEERING www.danstengineering.co.uk <small>DRAWING NOT TO BE DUPLICATED OR REPRODUCED WITHOUT WRITTEN PERMISSION FROM danST Engineering.</small>	MACHINING TOLERANCES ± 0.25 mm / 0.01" UNLESS OTHERWISE STATED	MATERIAL FINISH QTY	REMOVE ALL SHARP EDGES	DO NOT SCALE
	FABRICATION TOLERANCES ± 1 mm / 0.04" UNLESS OTHERWISE STATED	DETAILED BY user DESIGNED BY user CREATED 21/01/2022	PROJECT NAME	
	A3 SHEET SIZE	1 ST ANGLE	COMPONENT DESCRIPTION	
			JOB CARD	DRAWING NUMBER TPED-MX5NC-003
				SHEET 1 / 1